



A MINI NEWSLETTER

What's inside?

- Letter from the Editors p. 1
- Bates-Specific Resources for Teaching..... p.2
- CITL in 23-24 (recap)..... p. 3
- CITL in 24-25 (on tap)..... p. 4
- Upcoming Events & Programs.....pp. 5-6
 - Course (Re)Design Institute
 - BBC Pedagogy Matters
 - Teaching Large Classes in Large Classrooms Workshop
 - Fall Reading Group: Hard Work of Difficult Discussions
 - Teaching Triangles & Communities of Practice



A Letter from the Editors

The 2024-2025 academic year is (almost) here! If this is your first with Bates, then welcome. If this is not, then hi again. We are the Center for Inclusive Teaching and Learning (CITL) and located in Dana Building, which is brick on the outside, **green** on the inside. But don't confuse us with Bonney; we have more **green**.

We are here to support everyone, faculty and staff alike, who educate others on this campus. We offer consultations, collaboration opportunities, workshops, panels, and community building events. We also have this pretty stellar newsletter (don't click away, you're already here) that will arrive in your inbox at the beginning of each month. This one is abbreviated because it's summer, but come September, we will be sharing the amazing teaching and learning happening at Bates and beyond.

*Lindsey
Hamilton*  *Wells
Castonguay*

RESOURCES

(Bates Specific)

Wondering if Bates has
a syllabus template?

It sure does.
RIGHT HERE

And a course
work-load estimator?
For all your course
work-load estimating.

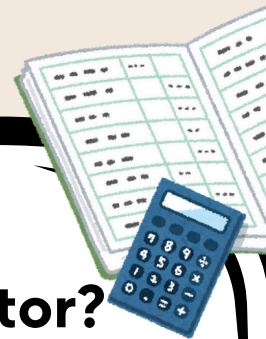
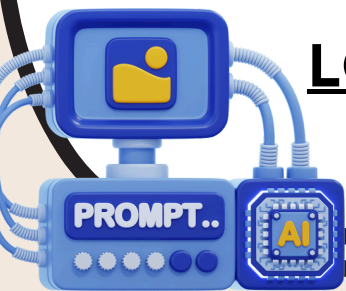
THAT'S HERE

Now you're wondering about
Generative AI specifically?

LOOK HERE

And what about your
Lyceum questions?

**HERE ARE
YOUR PEOPLE**



RECAP

What happened last year?

4128

HOURS OF PROFESSIONAL DEVELOPMENT

There. Was. So. Much. Time. With. You.

And it was awesome.

Some of you came by once or twice, but over two thirds of CITL participants attended at least three events, almost half came to more than five, and we saw a fifth 10+ times this year.

Bates takes pride in having excellent teaching and effective learning, and we see this reflected in the time and effort that Bates educators devote to pedagogical PD—over 4,000 hours!

This outrageously wonderful figure also means that we had the opportunity to get to know you, your work, and your learners. So, thank you for sharing your world(s) with us.

123

PROGRAMS OFFERED

Our programs this year came in all shapes and sizes. There were intensive multi-day workshops and lazy afternoon ice cream sandwiches. Some were focused on specific topics (e.g., Writing-To-Learn Activities) and some were intentionally unfocused, becoming a space to unwind or (re)connect with colleagues. Many of our events included food and drink, either at Commons or in our lovely lounge (Dana 216). Many were themed: We will fondly remember the wedding dress, champagne flutes, and tiered cupcakes at our “Say Yes to the Text: OER at Bates” event.

We look forward to another year of proactive, reactive, restorative, and creative programming. And if you have any ideas, let us know!

264

INDIVIDUAL/GROUP CONSULTATIONS

Consultations are a great way to go deep on a topic of your choice. Consults can be formal (schedule, plan for, do) and informal (pop your head in our door). They can be individual (just you) or with others (your unit, co-instructors, collaborators, or colleagues with shared interests). They can be 15 minutes to ask a quick question or 2 hours to really dig into an assignment or syllabus. They can be online or in-person (in our office, your office, or over a coffee in the Den). They can be proactive (“I would like to do this...”) and we’ll be a sounding board. They can be reactive (“I’m experiencing this...”) and we’ll be a listening ear. CITL can also be a thought partner, when you come to us with: “I recently learned about this!”

WORKED WITH 150+ FACULTY WORKED WITH 75+ STAFF EDUCATORS

Those 150+ faculty came from all divisions, units, and positions. Actually, over 75% of all assistant professors or visiting educators, 65% of all associate professors, and 50% of all full professors and of all chairs attended at least one CITL event this academic year.

And we loved, loved, loved working with staff educators from over 15 different units, centers, and offices. Staff educators are those who design learning materials or programs, foster productive learning environments, or promote individual growth and development. You might be a staff educator! CITL is for you, too.

ON TAP

What will happen this year?

AUGUST

Course (Re)Design Institute (CDI) at Bates
Pedagogy Matters with Bowdoin & Colby

Stephen Chew



BATES'S

COURSE (RE)DESIGN INSTITUTE

TUESDAY-THURSDAY | 20-22 AUG | 9AM-4PM DANA*
*BREAKFAST, LUNCH, & SNACKS PROVIDED

The Course (Re)Design Institute (CDI) focuses on designing inclusive courses and brings educators together to engage in meaningful guided discussions, hands-on workshops, and working sessions to (re)design a course, in which all components (e.g., activities, assessments) align & result in significant learning. Returning educators are encouraged to join the new faculty and CITL for this program!

"The CDI energized the way I think about designing my courses."

Come with ideas; leave with a syllabus!
Bonus: Meet new incoming faculty!

REGISTER

COLBY, BATES, & BOWDOIN'S
PEDAGOGY MATTERS

COGNITIVE CHALLENGES OF EFFECTIVE TEACHING

FRIDAY | 23 AUG | 9AM-12PM ZOOM*
*LUNCH TO FOLLOW ON CAMPUS

Interactive online workshop led by Dr. Stephen Chew, professor of psychology at Samford, who studies the impact of cognitive load on learning, the importance of student curiosity and trust in the teacher, and the misconceptions that students bring into the classroom. After this virtual talk, join other attendees in Commons for lunch and chitchat.

REGISTER

TEACHING LARGE CLASSES (AND IN LARGE CLASSROOMS)

WEDNESDAY | 28 AUG | 1PM-2PM KECK (PETTINGILL HALL G52)

Have 30+ students? Worried how to keep them engaged, create a space all can learn, and still provide (individual) feedback? How about that mongo classroom you were just assigned? There are lots of challenges when working with many learners and in lofty spaces, this workshop will provide strategies and thought-partners so that you are better prepared! With optional lunch beforehand.

REGISTER

FALL

WINTER

- Workshops (e.g., **Teaching Large Classes** on 8/28)
- Teaching Triangles (see page 4)
- Group Instructional Feedback Technique (GIFT)
- Communities of Practice (see page 5)
- New Faculty
 - '24 FYS Instructors
 - Languange Instructors
 - Staff Educators
- Reading Groups (see page 4)
- The Hard Work of Difficult Discussions
 - Design for Belonging

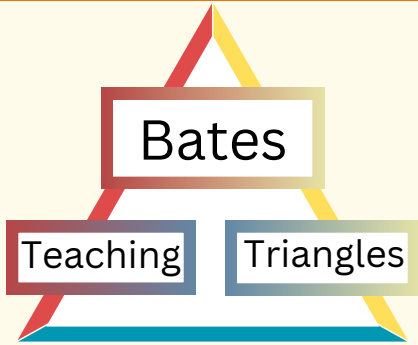
- Workshops (e.g., Syllabus Finalization on 1/3)
- Bring Your Own Assignment Workshop Series
- HHMI Inclusive Teaching Learning Community
- Teaching Triangles & GIFTs
- Communities of Practice
- New Faculty
 - '25 FYS Instructors
 - Staff Educators
 - ???? (TBA)
- Reading Groups
- Design for Belonging (cont.)

for more information,
see following pages

ON DECK

What will happen this semester?

CITL IS BRINGING IT BACK!



WANT TO LEARN MORE?

Register for our informational session (9/13/24) or find us via email or in Dana!

REGISTER

WHAT?

CITL matches you with two colleagues to engage in non-evaluative & growth-based class visits, discussion, and self-reflection.

WHEN?

Throughout the fall 2024 semester (total commitment = 7 hours)

- **Informational Session (1 hr)**
- Planning (1 hr)
- 2 Class Visits (2 X 1.5 hrs)
- Reflection Preparation (1 hr)
- Final Get-Together & Meal (1 hr)

**Friday Sept. 13 @ 12:00
(Commons + Lunch)**

WHO?

Anyone teaching classes in Fall 2024!

WHAT?

Discuss communal texts about difficult discussions, trigger warnings, brave spaces, power and platforms, and silenced/amplified voices in teaching and learning environments. Also, work through case studies!

During this election semester, we hope these get-togethers become a place to work through local, national, and international challenges and opportunities in our educational spaces. Also, helpful for RPPC courses!

NOTE: You can come to all get-togethers or just one!

WHEN?

Bi-monthly on Thursdays (**note:** times vary so that more can attend)

- **September 12 (9:00-10:00am OR 4:00-5:00pm; Dana 216)**
 - Texts-Pick Up and First Thoughts
- **September 26 (11:30am-1:00pm; place Chase 102/105)**
 - Case Studies: When you integrate difficult topics into class
- **October 10: (9:00-10:00am OR 4:00-5:00pm; Dana 216)**
 - Topics: Academic Freedom, Free Speech, & Political Correctness
- **October 24 (11:30am-1:00pm; place Chase 102/105)**
 - Case Studies: When students bring up the difficult topics in class
- **November 7: (9:00-10:00am OR 4:00-5:00pm; Dana 216)**
 - Topics: Pedagogy as a Weapon; Safe, Brave, & Accountable Spaces
- **November 21: (4:00-5:00pm, Dana 216)**
 - With the Banned Book Book Club, reading: *Fahrenheit 451*
- **December 5: (9:00-10:00am OR 4:00-5:00pm; Dana 216)**
 - Topics: RPPC & Our Own Teaching

WHO?

Anyone interested in discussing these topics through the lens of teaching and learning here at Bates.

The Hard Work of Difficult Discussions:

Free Speech, Academic Freedom, and Political Correctness



Fall 2024 CITL Reading Group

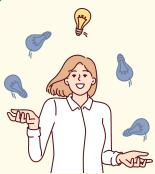
WANT TO LEARN MORE?

Look to the right, look at our website, or find us via email or in Dana!

REGISTER

ON DECK (cont.)

What will happen this semester?



New Faculty

1st Fridays, 12- 1 pm
Commons for lunch

You are juggling a lot as a faculty member in your first few years here at Bates. Join this group to help lessen the load as we will share tips and tricks for time management related to teaching, just in time student support information, and bolster each other while making connections with colleagues over a meal.

This community is for any faculty member who has **been at Bates fewer than three years.**

REGISTER

FYS Instructors

Every other Wednesday, 12-1 pm
Commons for lunch

Are you teaching a FYS in the fall? We invite you to join this community of practice to have an opportunity to talk about challenges we experience throughout the semester, to receive guidance and support around advising and teaching from peers, and to build community with colleagues.

Lindsey, teaching the FYS course *Sex in the Brain* this fall, will be the main facilitator.

REGISTER



Staff Educators

1st Tuesdays, 12-1 pm
Commons for lunch

Calling all staff educators!

Wait, who's a staff educator?

Do you design learning materials and programs, foster productive learning environments, or promote individual growth and development? Yes? You are a staff educator! No? We might find you opportunities!

Join this community of practice (basically lunch and chat) for a chance to work with colleagues from all over campus.

REGISTER

Language Instructors

1st Wednesdays, 4-5pm
Dana Lounge



Teaching languages (other than English) and their respective cultures, histories, literature etc. is a wonderfully nuanced profession. So, let's share, swap, and explore our language teaching stories, practices, and dreams in this new CoP.

Wells, who has taught German in English-dominant communities and English in German-dominant communities, and just finished a dual title Ph.D. in Language Science and Applied Germanic Linguistics, is excited to join this group as the main facilitator.

Snacks from around the world will be provided.

REGISTER

for more information,
see our website's event page: [HERE](#)