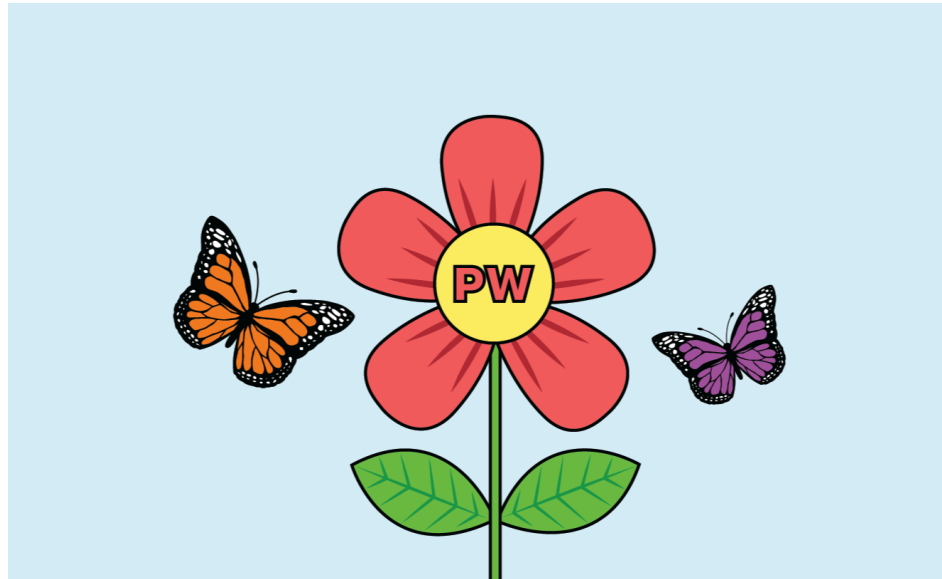


Bates Center for
PURPOSEFUL | WORK
NEWSLETTER



ANNOUNCEMENTS

L.A.B
LIFE AFTER BATES

Life After Bates: Roommates & Renting

Wondering what to expect or ask while looking for an apartment? How do you decide whether you will have roommates or not? Join us for a panel to hear from **Emily Diaz '23**, **Sandia Taban '22** and **Ben Conner '22** who will share their experiences finding housing in NY and D.C.!

Tuesday, April 8th from 7:00-8:00 pm in Commons 221

Register [HERE](#)

PW EMPLOYER PARTNER INTERNSHIPS

Employer partners have a relationship with Bates and are keen to hire Batesies! Most employer partner internships have guaranteed funding if secured. Open to the class of 2026 and 2027.

Apply by 4/7:

- [PW 2025: Marketing Intern](#) at Inner Child in New York, NY
- [PW 2025: Day Shelter, Immigration Integregation or Food Pantry Intern](#) at Trinity Jubilee Center in Lewiston, ME

Apply by 4/14:

- [PW 2025: Policy and Research Intern](#) at Maine Outdoor Brands
- [PW 2025: Farm Assistant and Refugee Advocate](#) at New Roots Cooperative Farm
- [PW 2025: Art Program Intern](#) at Asian American Arts Alliance



**PURPOSEFUL WORK
SHORT-TERM COURSES**
Transferable skills • Immersive experiences • Tangible final products

Searching for a Short Term Course?

Check out the [Practitioner Taught Courses](#) that still have spots: [Planetary Health](#), [Media \(and Journalism\) Literacy](#) for hands-on, skills-building courses in career fields you want to explore, and [Life Architecture](#), the design-thinking course to help build your future life and career!

If you'd like to get instructor permission to add any of these courses email mcowan@bates.edu!



EVENTS

In-Person Events:

- 4/7, 12pm: [PW: Job Shadow Planning and Prep Workshop](#) - Commons 221
- 4/7, 12pm: [Senior Drop-Ins](#) - Commons, Fireplace Lounge
- 4/8, 1pm: [PW PhotoBooth](#) - Library Arcade
- 4/8, 7pm: [PW Life After Bates: Roommates & Renting](#) - Commons 221

Employer Virtual Events:

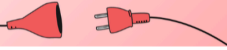
- 4/8, 6:30pm: [Barton Associates \(NESCAC\)](#) - healthcare staffing / full-time

JOBS

Consider stopping by our Drop-Ins for feedback on your resume and cover letter to strengthen your application!

- [Laboratory Support Technician](#) at University of Pittsburgh Medical Center (UPMC) - Apply by 4/7
- [Medical Laboratory Scientist or Medical Lab Technician](#) at University of Pittsburgh Medical Center (UPMC) - Apply by 4/14
- [Refuge Support Member - Northwest North Dakota National Wildlife Refuge Complex](#) at American Conservation Experience - Apply by 4/14
- [Advice Client Service Representative](#) at Vanguard - Apply by 4/16
- [Practice Coordinator](#) at LifeStance Health - Apply by 4/28

INTERNSHIPS



If you secure an unpaid or low-paying internship you can apply for PW Competitive Funding. The last funding deadline is May 1st!

- [Intern, Legislative Advocacy](#) at Best Friends Animal Society - Apply by 4/14
- [Summer 2025 Virtual Social Media Intern](#) at Lucky Nutrition, LLC - Apply by 5/1
- [Salesforce Intern](#) at TRC Companies - Apply by 5/2
- [Marketing Manager Birder \(intern\)](#) at Larkwire LLC - Apply by 8/1
- [Global Operations Support Intern](#) at Siemens Digital Industries Software - Apply by 9/21

DIVERSITY FOCUSED OPPORTUNITIES

- [LULAC Internship](#) - Rolling basis
- [The Asian American Foundation Internship](#) - Rolling basis
- [Undocumented Graduate & Professional Student Resource Hub](#): This resource hub aspires to be a comprehensive central point where campuses and students can find information on graduate and professional school access, retention, and success. It is meant to be a living document updated regularly and includes any new resources that campuses and organizations develop.



Hiring timelines differ by industry! Healthcare, education, and finance each have their own peak hiring seasons. Click here to learn what industries are actively hiring!

- [Application deadlines by industry](#)

DROP-INS

Drop-In Hours in Chase Hall, First Floor

The PW Peer Advisors are available this week during the following hours:

- Sunday: 7:00-9:00pm
- Monday: 1:30-3:30pm, and 7:00-9:00pm
- Tuesday: 1:30-3:30pm and 7:00-9:00pm
- Wednesday: 1:30-3:30pm and 7:00-9:00pm
- Thursday: 1:30-3:30pm
- Friday: 1:30-3:30pm

PW Drop-In Hours at the Student Center for Belonging & Community

The PW Internship Advisors are available this week during the following hours:

- Monday: 8:00-9:00pm

Pre-Health Drop-Ins: Monday: 4:00-5:00pm

Senior Job Search Drop-Ins in Commons, Fireplace Lounge: Monday: 12:00-1:00pm

Please note: *Drop-In Hours are only offered while classes are in session. There are no drop-in hours during exam periods or academic breaks.*



@BATESPURPOSEFULWORK



BATES CENTER FOR PURPOSEFUL WORK

Bates College and The Center for Purposeful Work are committed to providing an accessible experience for all students; if we can provide accommodations, please let us know. For directions and accessible entrance to Chase Hall please [click here](#).